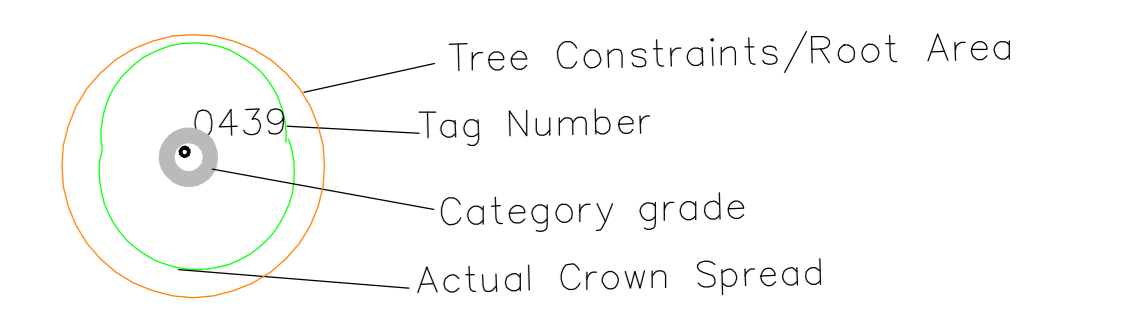
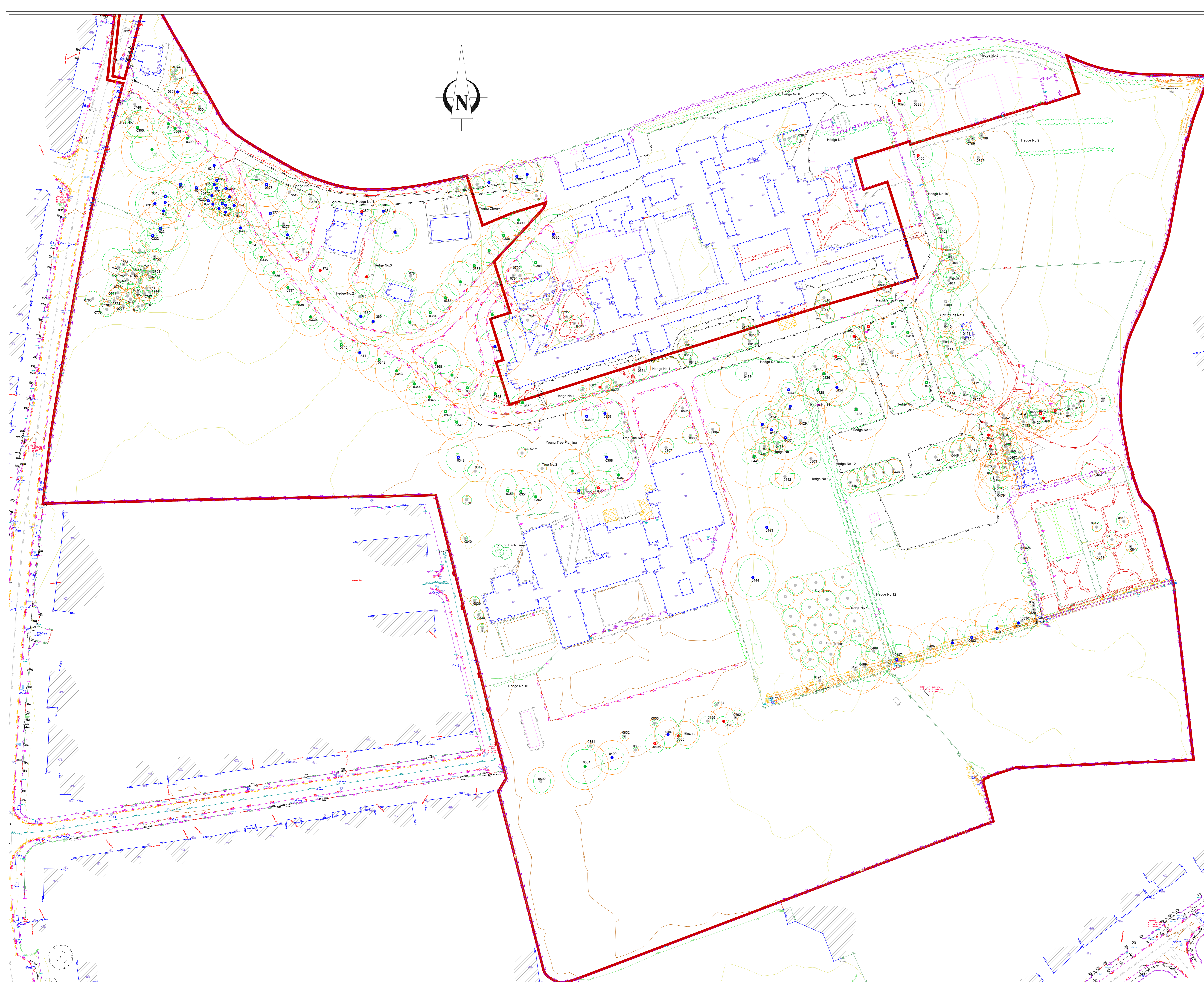


Notes:



BS5837: 2012 – Category Retention Rating

- **Category U Trees** – Trees in such a condition that any existing value would be lost within 10 years or being recommended for removal sound arboricultural practice.
 - **Category A Trees** – Trees of high quality/value with a min. of 40 years life expectancy.
 - **Category B Trees** – Trees of moderate quality/value with a min. of 20 years life expectancy.
 - **Category C Trees** – Trees of low quality/value with a min. of 10 years life expectancy.
- Sub Categories**
- 1 – Mainly Arboricultural values
 - 2 – Mainly Landscape values
 - 3 – Mainly cultural and conservation values.



ARBORIST ASSOCIATES LTD.
 94 BALLYBAWN COTTAGES, ENNISKERRY, CO. WICKLOW
 TEL: 01-2742011 / 087-2629589

TITLE: Tree Constraints Plan

Site: Lands at Central Mental Hospital,
 Dundrum Road, Dundrum, Dublin 14

DATE:	Dwg No. CMH001	Scale 1:500 @ A0
--------------	----------------	------------------